

# SESSION 5 REDD CASE

## CREATING A BASIC GENOGRAM


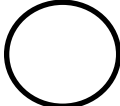



### WHAT IS A GENOGRAM?

As a CASA/GAL volunteer your primary goal for the child should be reunification when appropriate; however, if it is not appropriate then it is important to find other familial placement options prior to placing a child in foster care or prior to recommending adoption. A Genogram is a tool to explore those options.

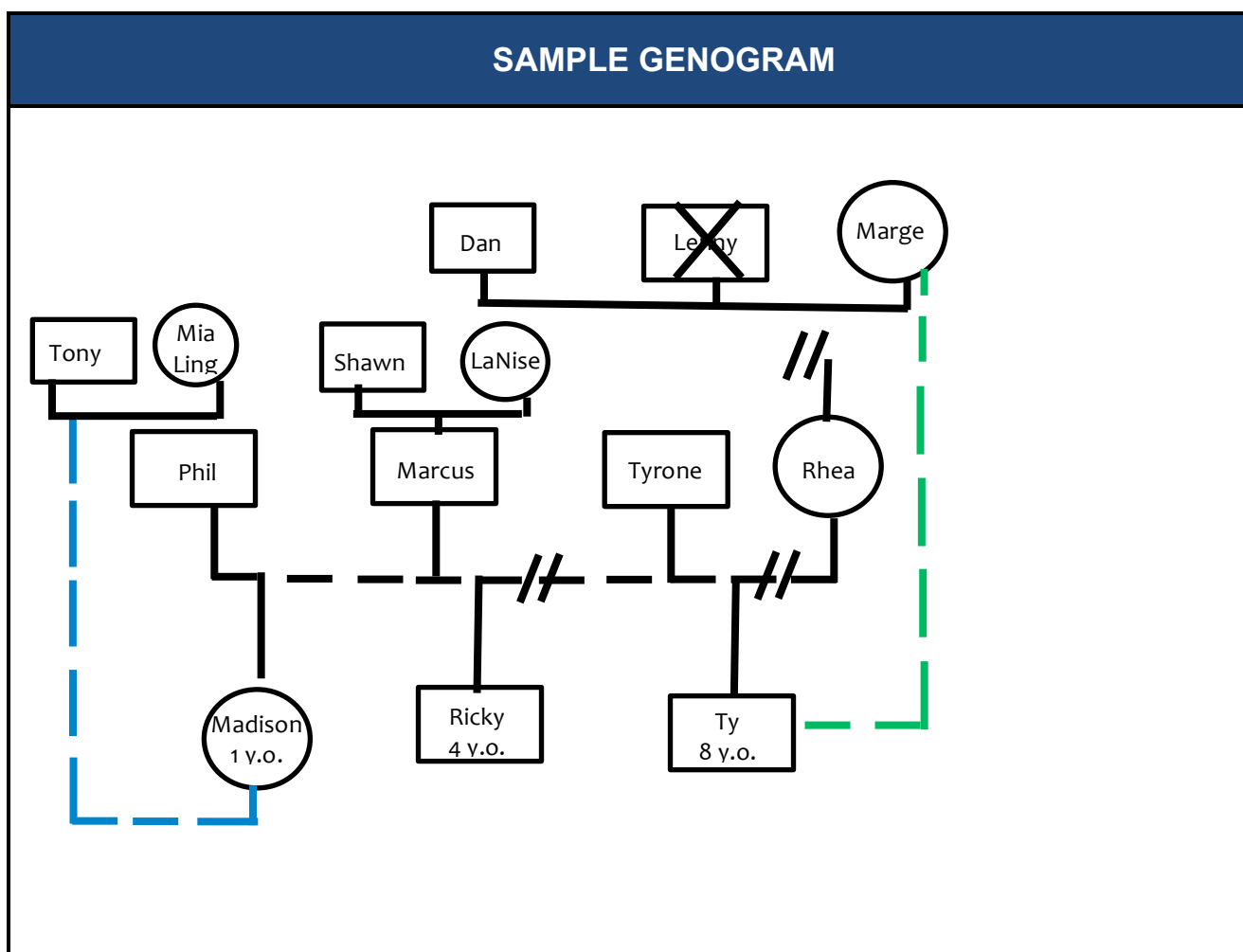
A genogram is a pictorial method of showing relationships between people by using shapes to convey their meaning. The genogram can be useful in gathering information about family members, understanding relationship dynamics and behavioral patterns, conducting assessments, exploring placement and family support options.

### HOW TO CREATE A BASIC GENOGRAM

Use the symbols listed below to help you create a basic genogram. Use the information from the Redd case to help you build the genogram. **NOTE:** If this were a real case you could also obtain information from your interviews.

SYMBOLOLOGY	
	MALES
	FEMALES
	DEATH
	MARRIAGE
	NON-MARITAL PARTNER

//	RELATIONSHIP ENDED
- - - - -	ADOPTION/GUARDIANSHIP
- - - - -	TEMPORARY CUSTODY



Ricky is currently placed in foster care as a result of his parents Marcus and Rhea’s most recent arrest for possession of drugs. Ricky is not doing well in his placement as he misses his parents very much. Are there any other family members identified in this genogram who could be considered as a potential placement option?

1. What about paternal grandparents? Are Marcus’ parents still living? What type of relationship do they have with their son? What type of relationship do they have with Ricky?
2. Are they interested in being considered as a placement option for Ricky?
3. Are they equipped to handle a 4 year old?

4. Are Marcus and Rhea okay with Ricky being placed with paternal grandparents?

**Activity 5.1 a**

Complete the “genogram” for the Redd Family, which will be a pictorial representation of all the different people who could potentially be involved in this case.

GENOGRAM FOR THE REDD FAMILY

Once you have completed the Genogram for the Redd Family please answer the below questions. You will be reviewing this activity and your responses when you meet with your facilitator:

1. Have you been able to identify other placement options for Mariah?
  
2. If so, please list who they are and your reasons for considering them as a placement options.